

A close-up photograph of several green reeds or grass blades, each covered with numerous small, clear water droplets. The blades are oriented vertically and slightly angled, creating a sense of depth. The background is a soft, out-of-focus light green.

RULING SUSTAINABILITY

Prodema[®]
Made to last wooden Products

*"It's not sufficient to do things better,
we need to do better things".*

Mark Shayler - ECO designer



Prodema[®]

Made to last wooden Products

IN **PRODEMA** WE WORK SO OUR COMMITMENT WITH THE ENVIRONMENT IS NOT LIMITED TO JUST SAYING WE ARE A SUSTAINABLE COMPANY, THIS AIM IS CLEARLY SHOWN IN THE MEASURABLE IMPROVEMENTS THAT WE HAVE OBTAINED.

FOR THIS REASON, WE ARE CONTINUOUSLY CREATING AND PUTTING INTO PRACTISE NEW ENVIRONMENTALLY FRIENDLY INITIATIVES. WE ARE NOW THE LEADER IN OUR FIELD IN MATTERS OF SUSTAINABILITY.

TRUE TO OUR COMMITMENT **PRODEMA** HAS MANAGED TO OBTAIN REAL RESULTS WHICH TRANSLATE INTO BENEFITS FOR OUR CLIENTS AND THE WIDER SOCIETY.



Prodema®

Made to last wooden Products

**PRODEMA IS
THE FIRST COMPANY
IN OUR SECTOR
ON A WORLDWIDE BASIS
TO OBTAIN THE ISO 14006
IN ECODSIGN.**



ECODesign identifies environmental aspects in product design with the aim to reduce negative impact during the course of its life cycle.

In the sector of high pressure laminates we have been the **first company** that has been awarded **ECODesign**. This is a great source of pride for us because it shows that we are the forerunners in environmental design. An effort which we have been rewarded for and which encourages us to keep bettering ourselves on a day to day basis.



IMPROVEMENTS INTRODUCED BY **PRODEMA** IN ECODESIGN

In the use of our panels

- **Increase the durability of our product.**

We have produced a new protection film for our panels, making them more resistant to extreme weather conditions, leading to a higher durability of our product.

As a consequence of this, **we have improved by 87% the environmental impact of our product** (depending on the colour).

Extraction of raw materials and components:

- **Incorporation of a film that is 100% recycled.**

We have replaced the film that we use in the back face of our products, for one that is made of 100% recycled plastic.

The environmental improvement of this new measure is 0.27%.

Packaging:

- **Reduction in the weight of plastic residue.**

We have replaced the metal banding by natural plastic banding, reducing considerably its weight.

- **Introduction of a temporary finer film.**

We have replaced the temporary film with one that is thinner but provides the same protection against scratches and knocks.

These two measures have led to an environmental improvement of 5.3%.

WE KEEP IMPROVING

Our commitment is firm and solid and we count on the fact that we will keep achieving measurable results in environmental issues.

These two measures will shortly be introduced:

- Re-use cleaning water from the gluing machines.

This measure leads to an improvement of 4.2% in the environmental impact during the production process.

- Replacement of the Kraft paper used in the core of the **ProdEX** panels with another recycled paper.

This measure leads to an improvement of 22.9% in the environmental impact during the production process.

PRODEMA HELPS YOU GAIN POINTS IN THE GRADING SYSTEMS FOR SUSTAINABLE BUILDINGS



Prodema[®]
Made to last wooden Products

Prodema allows you to gain up to 16 points in the grading system in the LEED classification system (Leadership in Energy and Environmental Design), the most extended on a worldwide level for the certification of environmentally friendly buildings.

In addition to the LEED, our products can also help you gain points in other grading systems in other markets such as Breeam, Casbee, GBTool, Green Globes...

For us it is very important that our clients understand the environmental benefits of our products thus enabling them to achieve a higher mark on the grading system for their buildings.



LEED **POINTS** for Prodema panels

1-3
Points

BUILDING REUSE: EXISTING WALLS, FLOORS AND ROOF

Façade panels (**ProdEX**) can be used over existing structures and envelopes enabling the builder to create a renovated façade without having to destroy the existing walls, floors or roof. Depending on the percentage that the builder decides to maintain, 1, 2 or 3 points can be earned.

1
Point

BUILDING REUSE - MAINTAIN INTERIOR NON STRUCTURAL ELEMENTS

One point can be earned by reusing interior non structural elements in at least 50% of the completed building.

1-2
Points

CONSTRUCTION WASTE MANAGEMENT

All our panels can be recycled or salvaged. Depending on the recycled or salvaged percentage, 50% or 75%, 1 or 2 points can be earned.

1-2
Points

MATERIAL REUSE

The life expectancy of our façade panels, enables their relocation or reutilization in new construction or renovation projects of a building. 1 point can be earned by reusing 5% of the building materials, and an additional point can be earned by reusing 10%.

1-2
Points

RECYCLED CONTENT

Depending on the thickness of the panel, between 3.5% and 4% of the content of the **ProdEX** product consists of recycled raw materials and the objective is to improve this percentage for 2012.1 or 2 points can be earned depending on the percentage of our material that the builder decides to use.

0-1
Point

CERTIFIED WOOD

We have developed a management system of Chain of Custody /CoC according to PEFC requirements (Programmed for the Endorsement Forest Certification). Points can be earned for this credit in other sustainable building rating systems.

1
Point

LOW - EMITTING MATERIALS: COMPOSITE WOOD AND AGRIFIBER PRODUCTS

Our products do not have indoor air contaminants that are odorous, irritating and/or harmful to the comfort and well-being of installers and occupants, urea formaldehyde for instance.

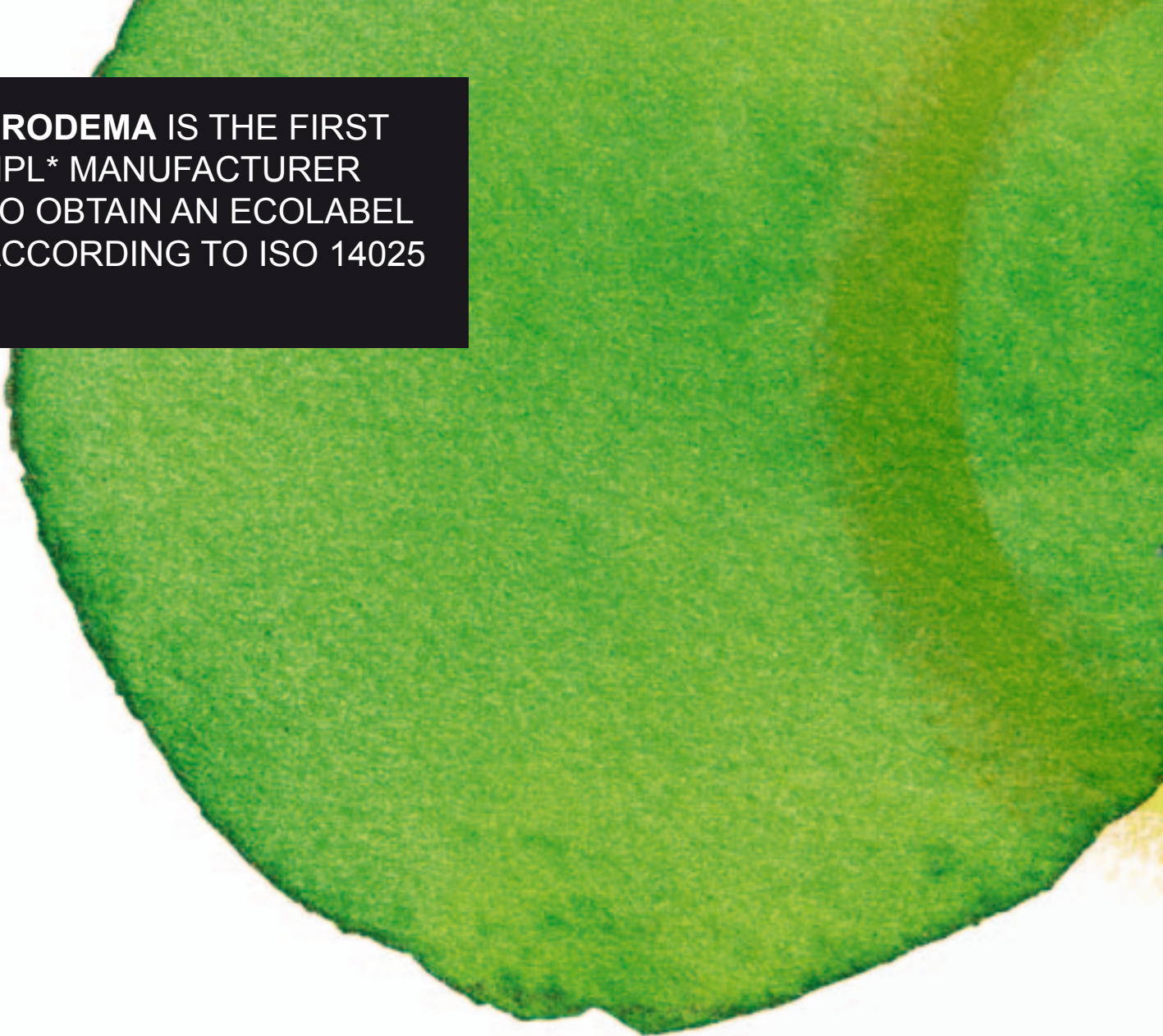
1-5
Points

INNOVATION IN DESIGN

In **Prodema** we have introduced two substantial improvements: the adoption of a new environmental management system based on the ISO 14006 and the securing of the ECOLabel based on the ISO 14025. Innovations which can earn you between 1 and 5 points, based on the criteria of the evaluator.

If you need further information please do not hesitate to get in touch with us at:
prodema@prodema.com

**PRODEMA IS THE FIRST
HPL* MANUFACTURER
TO OBTAIN AN ECOLABEL
ACCORDING TO ISO 14025**

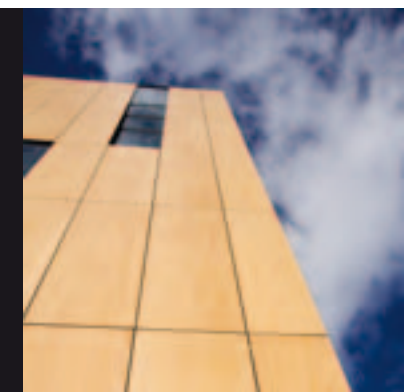


The environmental declarations (ECOLabels) provide quantified information during each stage of its life cycle (raw materials, manufacturing, transport, use and end of life). This allows us to make a comparison between products that fulfil the same function.

Architects are able to compare the environmental behaviour of different materials and thus decide which one is the most appropriate and sustainable for a project.

Here in **Prodema** we have tried to go a step further with our range of **ProdEX** products, natural wood panels for exterior cladding. We have been **the first in our field to obtain an ECOLabel**, which facilitates the construction of sustainable buildings, increases economic and environmental efficiency and sense of well being.

*High Pressure Laminates.



Prodema®

Made to last wooden Products

GUIDED BY
ONE PHILOSOPHY

Prodema is noted for its constant concern for the wise use of the natural resources and the impact our activity has on the environment.

In 2002 we obtained the **ISO 14001 Certificate in Environmental Management** for our manufacturing plant in Legorreta (Spain). This system identifies the different environmental aspects that need improving and creates a plan of action to act upon.

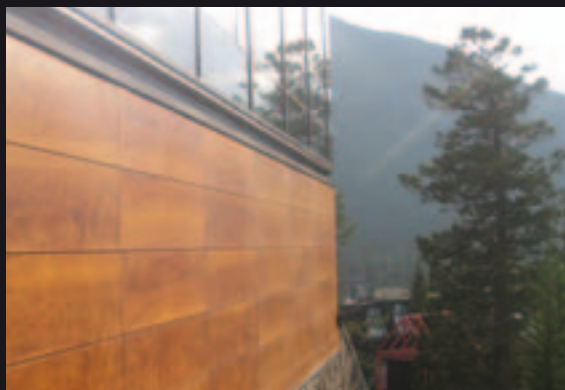
Since 2007 **Prodema** has the **Certification Stamp PEFC**, which guarantees that our products have been made with wood that comes from forests managed in accordance with environmentally and socially responsible standards. In line with this, **Prodema** has at its disposal a list of suppliers which have the PEFC Certificate. We also provide our catalogues in digital format, offering our customers a more environmentally friendly solution.



OUR COMMITMENT TO INNOVATION TOGETHER WITH THE DEVELOPMENT OF GREEN POLICIES AND RESPECT FOR THE ENVIRONMENT, ARE SOME OF THE PILLARS ON WHICH **PRODEMA** IS BUILT AND ONE OF THE ELEMENTS THAT BEST SET US APART AS ONE OF THE LEADERS IN OUR SECTOR IN MATTERS OF THE ENVIRONMENT AND CONCERN FOR THE WORLD WE LIVE IN.

THIS NOT ONLY PUTS US WELL ON THE WAY OF SUSTAINABLE DEVELOPMENT, BUT IT ALSO PROVIDES COMPETITIVE ADVANTAGE AND RECOGNITION AMONGST OUR CLIENTS.

Prodema. Ruling sustainability.





Prodema[®]

Made to last wooden Products





there are places where we should never build

However, when it is necessary, it should be done with materials which best adapt to nature; the very products of nature such as those made by **Prodema: natural wood composites** entirely committed to the most **sustainable architecture**.



Prodema[®]

Made to last wooden Products

Bº. San Miguel, s/n • 20250 Legorreta • Gipuzkoa (SPAIN)

T.: (+34) 943 80 70 00 • F.: (+34) 943 80 71 30

E.: prodema@prodema.com

w w w . p r o d e m a . c o m